

Dominator 1200 XT™

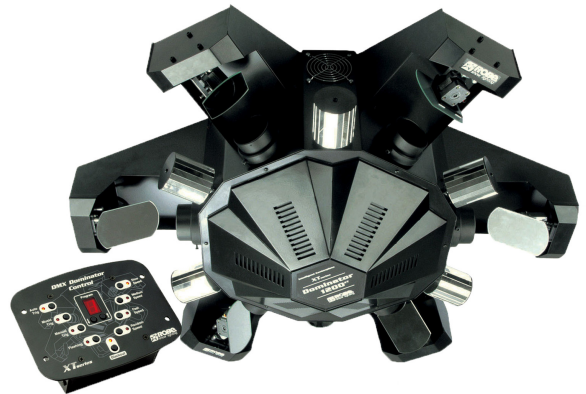
The Dominator's center-piece is a 6-fold multi-scanner featuring 6 arms with moving mirrors and barrel mirrors to create fantastic lighting effects.

**Light source**

HMI 1200/GS discharge lamp

**Effects**

6x Double condenser system, 6x 3-facet rotating prism



The rotation-speed of the barrel mirrors is fully controllable, and the Dominator 1200 XT also has a stunning 3-facet prism effect, 6 different gobos and 3 different dichroic color filters. The Dominator 1200 XT is exclusively supplied with a DMX controller, complete with a series of pre-programmed sequences.

Technical Specification

Source

- Lamp: HMI 1200/GS discharge lamp

Optical system

- 6x Double Condenser System
- 6x 3-facet rotating prism

Electromechanical effects

- 6 mirrorheads with PAN & TILT
- 6 mirrorhead cylinders rotating in both directions
- Effect carousel 1: multicolour gobo, 6 different static gobos/colours
- Effect carousel 2: 3 different dichroic colour filters (magenta, cyan, yellow), rotating 3-facet prism
- Shutter: Black-out and dimming

Control and programming

- Protocol: USITT DMX-512
- Control channels: 12
- Data in/out: Locking 3-pin XLR

Static gobos

- Metal gobos - outside diameter = 33 mm
- Image diameter = 29 mm, thickness = 0,2 mm

Electrical specification and connections

- Wiring options: EU version - 230 V, 50/60 Hz, US version - 208 V, 60 Hz
- Power consumption: 1500 W

Approvals

- CE compliant

Mechanical specification

- Length: 1005 mm (39.0")
- Height: 475 mm (18.7")
- Depth: 950 mm (37.4")
- Weight: 48 kg (106 lbs)

Rigging

- Mounting bracket

Legal

- Dominator 1200 XT™ is a trademark of Robe lighting s.r.o.
- Dominator 1200 XT™ is patented by Robe lighting s. r. o. and is protected by one or more pending or issued patents